

LOCATION MAP



CREDITS

ARCHITECT
Unusual Spaces

RCC CONSULTANT
Hansal Parikh & Associates

ADVOCATE
V.P. Kadekar

BRAND & MEDIA
Silk Route



Sr. No.226/27, Behind Ambiance Hotel, Annapurna Hotel Lane, Kaspate Wasti, Wakad Pune-411057

Ph.: +91 20 6410 7589, Mob.:+91 90280 28899/ 92255 12069

Email: sales@vardhamandreams.com | www.vardhamandreams.com | www.vardhamanspaces.com

Disclaimer: "All the specifications, plans, images, designs, facilities, dimensions and other details mentioned herein are only indicative and artist's impression and not to scale and/or specifications. Right to change any of these is reserved in the interest of the development without any notice and/or if any concerned authority/institut for any change, during the course of approvals. This material does not constitute an offer or contract. Any purchaser/ investor shall be governed only by the terms and conditions of the Agreement to be entered into between the parties. Construction shall be subject to the change in or variation of the terms and conditions imposed by concerned authorities. Details mentioned in this material shall not govern such transactions and the images herein are for presentation purpose only".





JUST LIKE YOU DREAMED IT!

Each and every one of us have a dream of owning a beautiful home, where we can relax and spend time with our loved ones. After the immense success of Phase I, Vardhaman Spaces has brought to you Vardhaman Dreams Phase II – a gateway to your dream lifestyle. Located in the upmarket locale of Wakad, the project offers you unmatched edge of proximity and connectivity to other landmarks. Lifestyle at Vardhaman Dreams Phase II is a manifestation of your aspirations.





WHEN A HOME THINKS ABOUT YOU, IT'S LIKE A DREAM COME TRUE!



Vardhaman Dreams Phase II offers you every modern comfort letting you be you! Crafted with ultimate precision, the habitat consists of thoughtfully designed 1, 2 & 2.5 BHK uber-cool residences. Vardhaman Spaces is offering you avant-garde amenities, superior construction, well-defined architecture and spaces that serve you absolute privacy and unmatched comfort with this project. Vardhaman Dreams Phase II will pamper you with absolute happiness!





IT ALL SEEMS LIKE A DREAM,
BUT IT'S TRUE
JUST FOR YOU!



With the urban amenities and happening vicinity, you can just turn around your weekends into cherishable moments of your life. Every single entity of the project has been planned to great detail and crafted keeping you in mind.

For us, your happiness and comfort is a priority and the same reflects in this amazing creation.



AN EPITOME OF NEVER-ENDING SWEET DREAM!



Equipped with all excellent facilities and superlative features like club house, gymnasium, multipurpose hall, senior citizen sit-outs, there is a space for every member and every occasion in your family. Your little ones too will express their hearts out with children play area, activity wall and open amphitheatre.

In totality, it all seems nothing but a never-ending sweet dream.





AMENITIES



CLUB HOUSE

- Party Lawn
- Gymnasium
- Multi Purpose Community Hall
- Indoor Games
 - Table Tennis
 - Carrom Board
 - Chess Corner

CHILDREN'S RECREATION

- Children's Play Area
- Sand-pit
- Open Amphitheatre

OUTDOOR SPORTS

- Multi Utility Court
- Practice Basket Ball Court
- Exercise/ Yoga Zone

LANDSCAPE GARDEN

- Community Garden
- Senior Citizen Sit Outs
- Stage
- Gazebo / Pavilion
- Trellis

AUTOMATION

- Provision For Wi-fi
- Provision For Broadband
- Power Backup For Common Utilities / Areas
- Provision For Inverter Point
- Automatic Hi-speed Elevator

SAFETY & SECURITY

- Designer Entrance Lobby
- CCTV Surveillance System
- Intercom Facility
- Video Door Phone
- Boom Barrier On Entrance Gate
- Security Cabin

GREEN FEATURES

- Garbage Chute
- Rain Water Harvesting
- Fire Fighting System
- Solar System In 1 Washroom





Identical Perspective View - A Wing, 2.5 BHK



Identical Perspective View - A Wing, 2 BHK



Identical Perspective View - B Wing, 2 BHK



Identical Perspective View - C Wing, 2 BHK



Identical Perspective View - C Wing, 1 BHK



Identical Perspective View - C Wing, 2 BHK

SPECIFICATION

STRUCTURE:

- Earthquake Resistant RCC Structure
- Aesthetically Designed Elevation

WALL FINISH:

Masonry:

- 6" Thick AAC Internal & External Walls
- Internal Walls With POP/ Gypsum Finish
- Sand Faced Plaster Externally

Paint:

- Internally Acrylic Emulsion Paint
- Externally Weather Shield Acrylic Paint

Tiles:

- Designer Dado Tiles In The Washroom, Toilets & Above Kitchen Platform

FLOORING:

Living Room, Bedroom & Kitchen:

- 2'X2' Vitrified Tiles

Washroom, Toilet & Terrace:

- Branded Antiskid Floor Tiles

DOORS:

Entrance Door:

- Elegant Designer Laminated Flush Door
- Brass Finish Branded Accessories & Fixtures

Bedroom:

- Both Side Laminated Flush Door

Toilets:

- Granite Frame With Both Sides Laminated Waterproof Flush Door

Terrace:

- Powder Coated M.S. Folding Door
- Stainless Steel Railing With Toughened Glass

WINDOWS:

- 3 Track Powder Coated Aluminium Sliding
- Insect Mesh
- M.S. Safety Grill & Granite Frame

SEMI – FURNISHED KITCHEN:

- Granite Platform With Branded Stainless Steel Sink
- Attached Dry Balcony
- Provision For Water Purifier

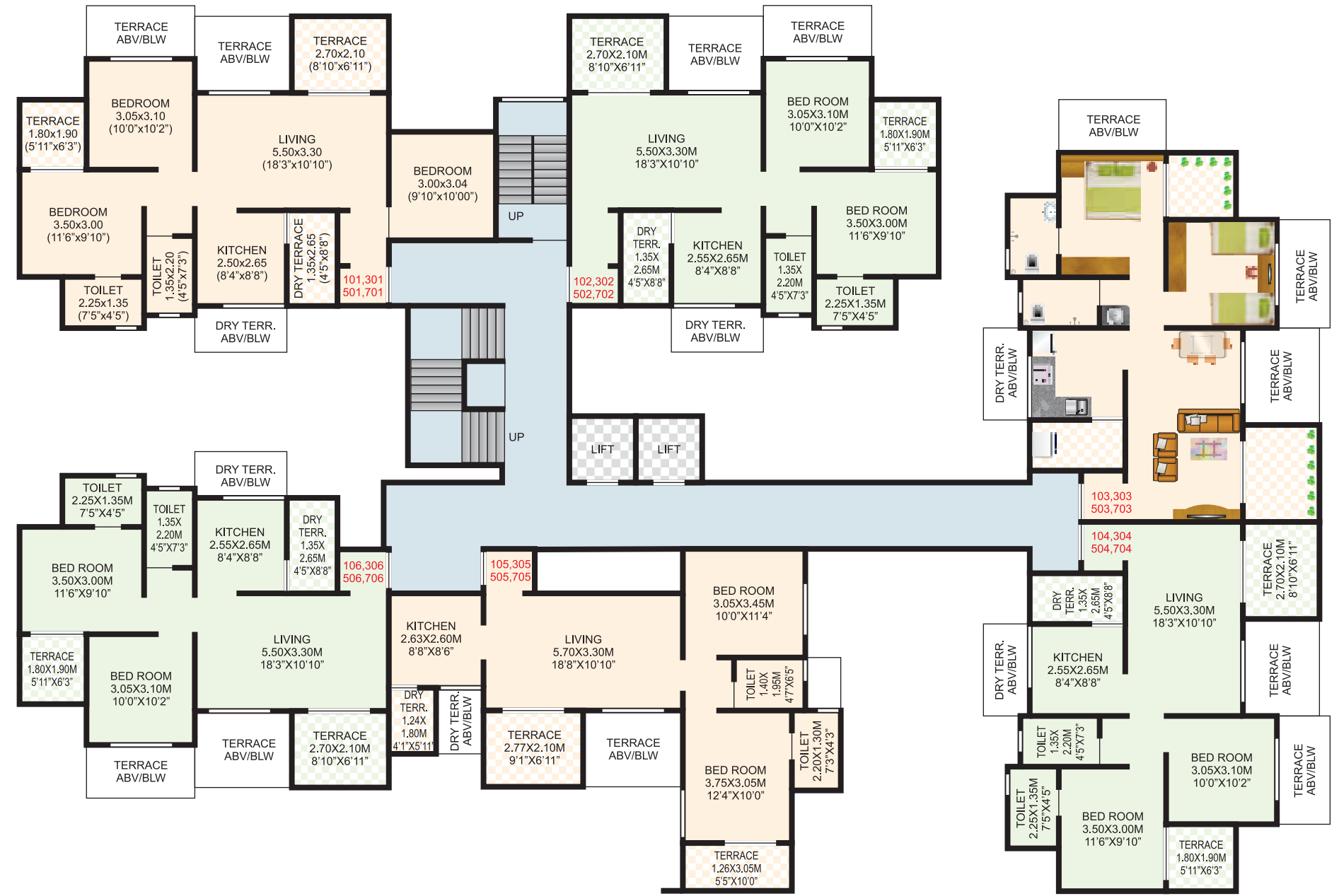
ELECTRICAL:

- Concealed Fire Retardant Low Smoke Copper Wires
- Circuit Breaker
- Cable, T.V. & Telephone Point In Living & Bedroom
- Premium Quality Modular Switches
- Split A.C. Provision In Bedroom
- Fridge, Oven & Food Processor Point In Kitchen
- Provision For Exhaust Fan In Kitchen & Washrooms
- Provision For Washing Machine Point In Dry Balcony

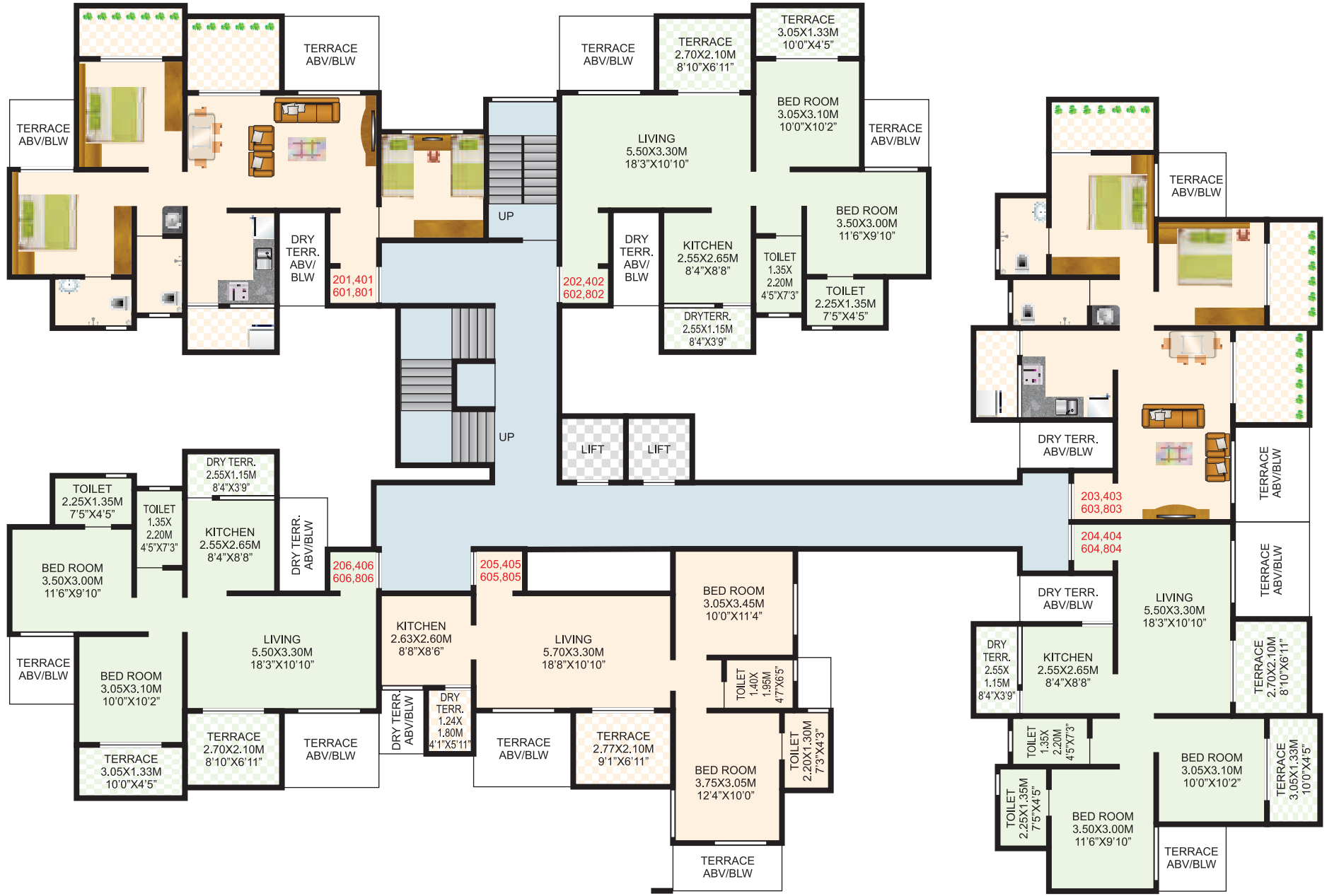
PLUMBING:

- Concealed Piping
- Premium Quality Sanitary & Bath Fittings
- Premium Range Branded C.P. Fittings
- Provision For Geyser In Bedroom
- Provision For Water Purifier In Kitchen
- Hot & Cold Mixers In On Wall Washrooms

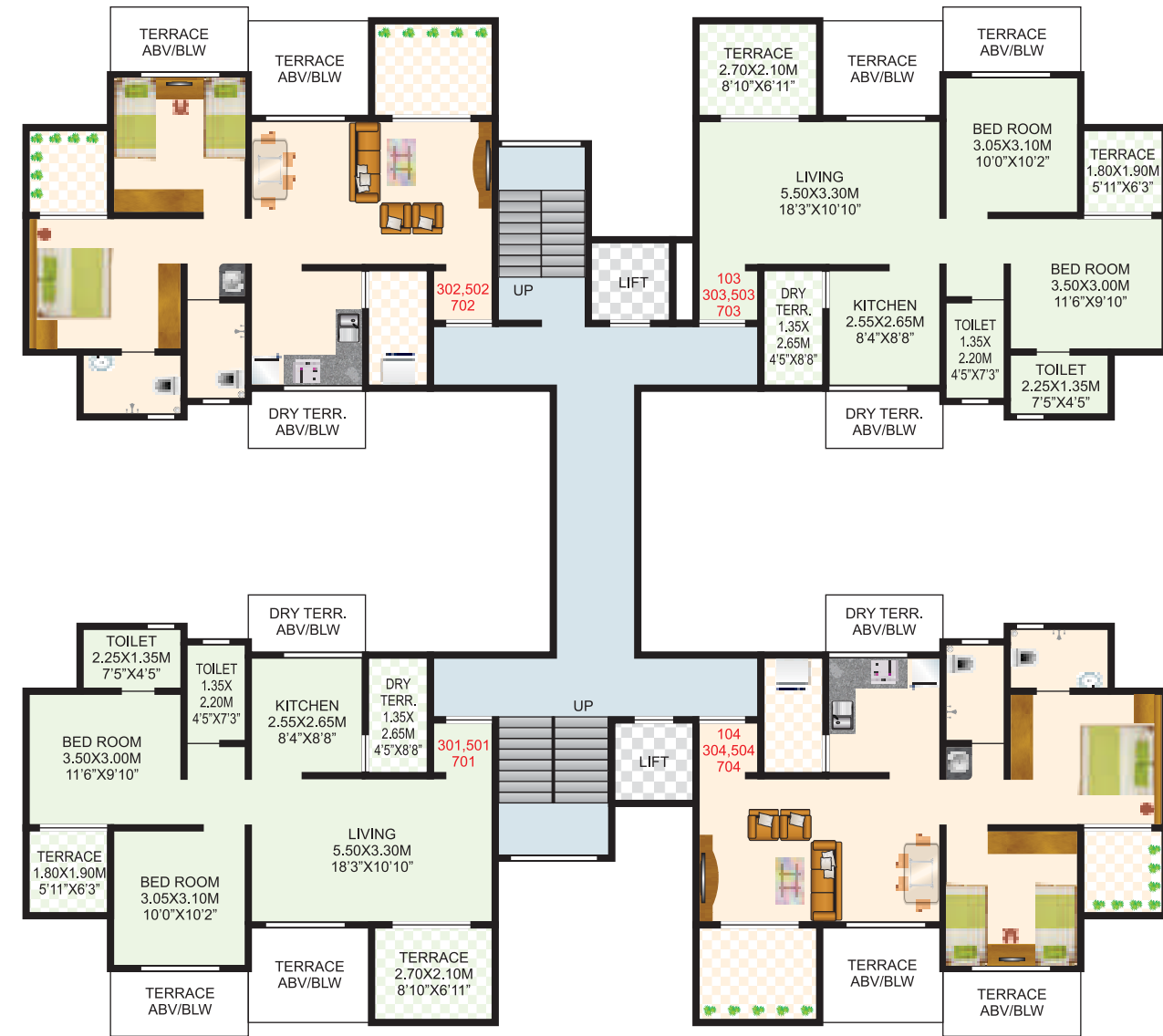
WING A - TYPICAL 1st, 3rd, 5th, 7th FLOOR PLAN



WING A - TYPICAL 2nd, 4th, 6th, 8th FLOOR PLAN



WING B - TYPICAL 3rd, 5th, 7th FLOOR PLAN



WING B - TYPICAL 2nd, 4th, 6th, 8th FLOOR PLAN

